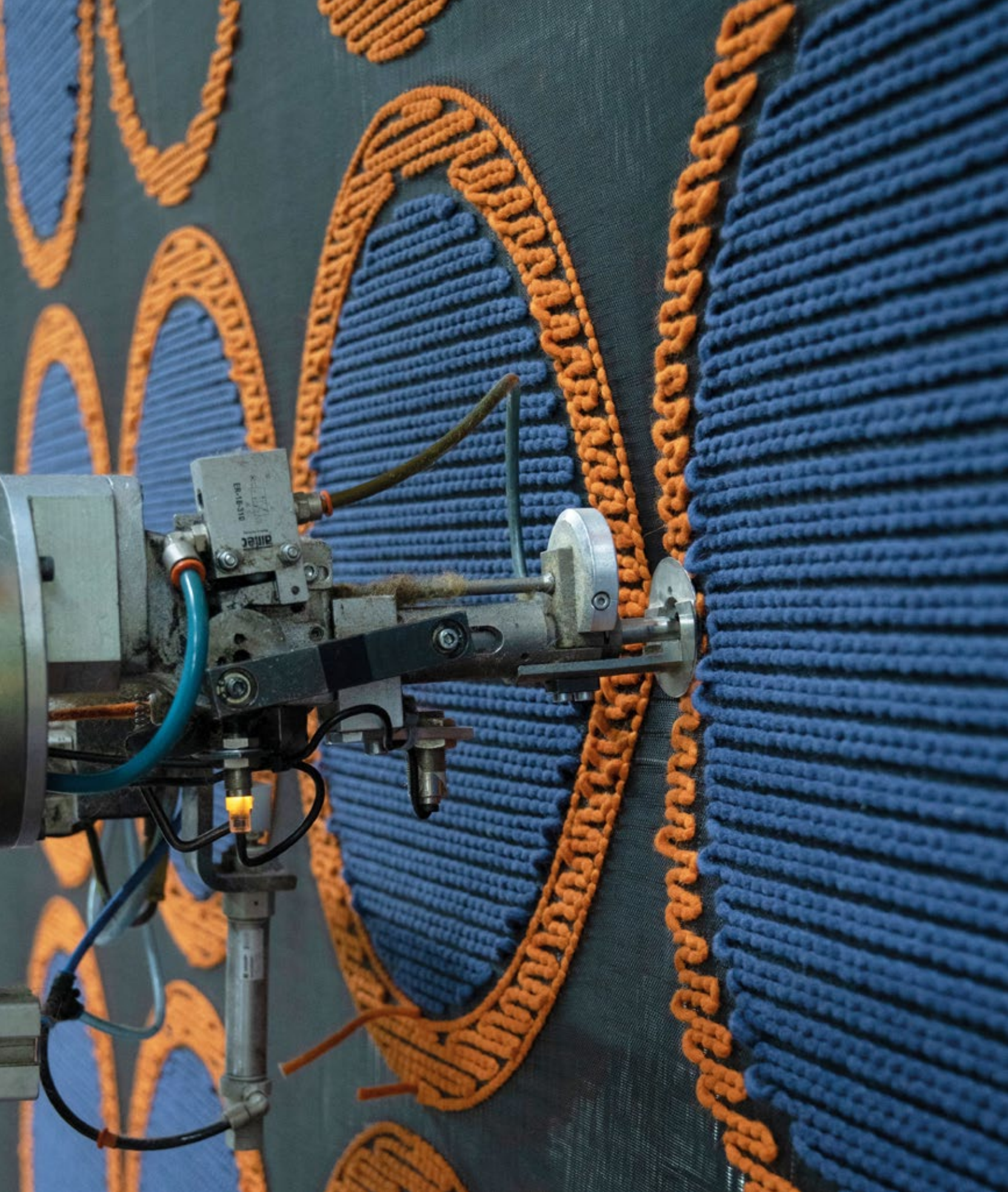


**BRINK & CAMPMAN**  
home interiors  
**COLLECTION '24**







# Index

## Tufted Woven

Jazz	8
Ray	10
Spring	12
Young	14
Pop Art	16
Dots	18
Rocks	20
Origin	24
Gravel	26
Arch	28
Shade	30
Mural	34
Twinsset	36

## Handwoven

Pebble	40
Cobble	42
Marble	44
Grain	46
Atelier	48
Artisan	50

## Handtufted

Decor	54
Estella	84

## Handknotted

Yeti	90
------	----

## In/Outdoor

Deck	94
Lace	96

## Brands

Laura Ashley	102
Morris&Co	106
Sanderson	110
Orla Kiely	114
Wedgwood	118
Ted Baker	122
Harlequin	126
Scion	130
Florence Broadhurst	134

# Size matters

Is it a small rug or an extra-large rug that is creating defined areas in the room? Size does matter!

The impact of a rug with its texture and colour on a room is definitely there, whether you choose a small version or an extra-large. Depending on the technique Brink & Campman offers you a vast range of standard sizes.

Would you like to order another size? No problem, we tailor your customer's desires and requirements with love.



140 x 200 cm / 4'7" x 6'7"



170 x 240 cm / 5'7" x 7'10"



4 200 x 300 cm / 6'7" x 9'8"



250 x 350 cm / 8'2" x 11'6"

# Shape matters

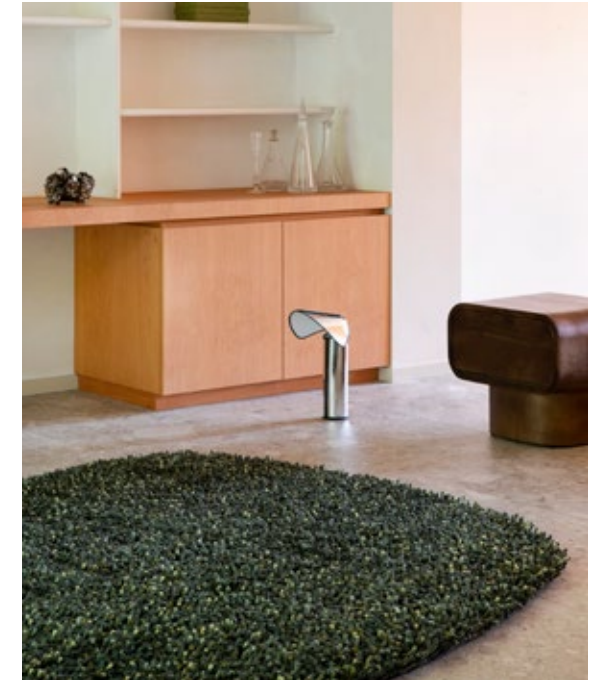
Is it a curved carpet or a hexagon shaped rug which is setting the tone in the room? Shape does matter!

Next to rectangles Brink & Campman offers you an unlimited variety of rug shapes for all tufted qualities.

The only boundaries are the sizes of the ground screen.

We tailor your customer's desires and requirements with love.

Whether it is a circle, an organic shape, a flower or even a mythical animal we craft it with joy for our customer.





# Brink & Campman

Welcome to our rug company, where tradition meets innovation. We have been designing and crafting rugs since 1897 and our passion for creating beautiful, functional pieces for your home is as strong as ever. We even were granted by His Majesty the King to use the royal coat of arms this year of which we are very proud.

Our collection of rugs is designed to bring life to any room, with lively geometric motifs, graphic contrasts, refined yarn mixtures and a playful touch. We believe in revitalizing old concepts and creating something new and exciting.

At Brink & Campman we take pride in our friendly, warm-hearted approach to design. We want our rugs to be comfortable and inviting, with a playful spirit that will bring joy to your home. Our rugs are eye-catching, contemporary and durable, perfect for everyday use. Each design is crafted with care to ensure that it will stand the test of time.

Our designs are created with an optimistic feel, and we believe that a rug should be more than just a practical accessory. It should be an expression of your personal style and a reflection of your personality. We want our rugs to be the focal point of your room and to make you feel at home.

We invite you to browse our collection and discover the perfect rug for your home. Whether you're looking for a statement piece or something more understated, we have something for everyone. We are confident that you'll find something that you'll love and will enjoy for many years to come.

# Jazz

tufted - pure new wool

## jazz modest

total weight ca 3650 gr/m2 (low pile)

pile weight ca 2250 gr/m2 (low pile)

pile height ca 17 mm (low pile)

## jazz lush

total weight ca 6190 gr/m2 (high pile)

pile weight ca 4790 gr/m2 (high pile)

pile height ca 10/70 mm (high pile)

## jazz dense

total weight ca 3100 gr/m2 (loop pile)

pile weight ca 1700 gr/m2 (loop pile)

pile height ca 5 mm (loop pile)

available sizes:

140x200 cm 4'7" x 6'7"

170x240 cm 5'7" x 7'10"

200x300 cm 6'7" x 9'8"

250x350 cm 8'2" x 11'6"

custom sizes on request



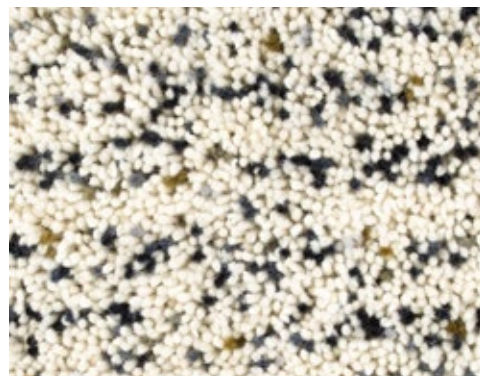
Jazz modest | 158803



Jazz lush | 158703



Jazz dense | 158903



Jazz modest | 158804



Jazz lush | 158707



Jazz dense | 158904



Jazz dense | 158903



# Ray

axminster woven - pure new wool  
total weight ca 3900 gr/m<sup>2</sup>  
pile weight ca 2500 gr/m<sup>2</sup>  
pile height ca 15/45 mm  
available sizes:  
140x200 cm 4'7" x 6'7"  
170x240 cm 5'7" x 7'10"  
200x300 cm 6'7" x 9'8"  
custom sizes on request



Ray 158601



Ray 158604



Ray 158607 11

# Spring

tufted - pure new wool  
total weight ca 3900 gr/m<sup>2</sup>  
pile weight ca 2500 gr/m<sup>2</sup>  
pile height ca 15/45 mm  
available sizes:  
140x200 cm 4'7" x 6'7"  
170x240 cm 5'7" x 7'10"  
200x300 cm 6'7" x 9'8"  
250x350 cm 8'2" x 11'6"  
custom sizes on request



Spring 059111



Spring 059103



Spring 059137



Spring 059117



Spring 059123



Spring 059107



Spring 059114



Spring 059137





# Young

tufted - pure new wool  
total weight ca 3900 gr/m<sup>2</sup>  
pile weight ca 2500 gr/m<sup>2</sup>  
pile height ca 15/45 mm  
available sizes:  
140x200 cm 4'7" x 6'7"  
160x230 cm 5'3" x 7'6"  
200x280 cm 6'7" x 9'2"  
250x350 cm 8'2" x 11'6"  
custom sizes on request



Young 061804



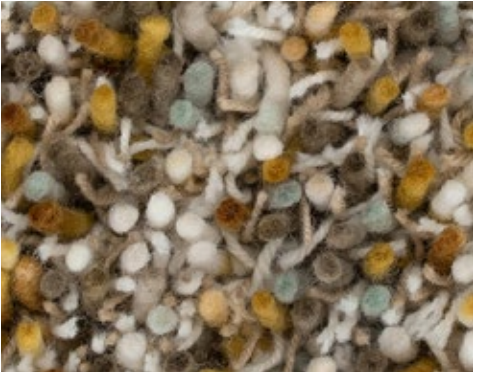
Young 061801



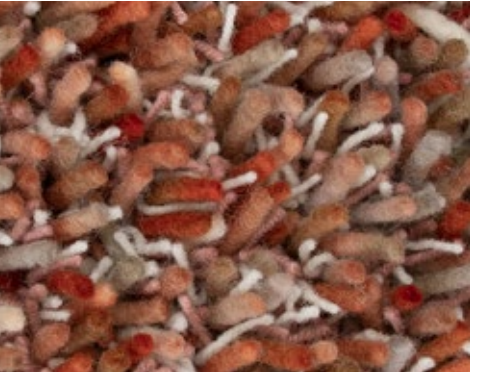
Young 061805



Young 061807



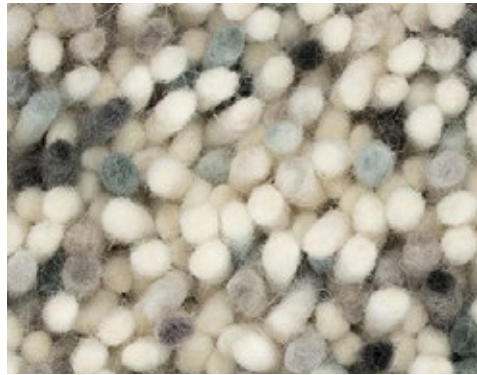
Young 061806



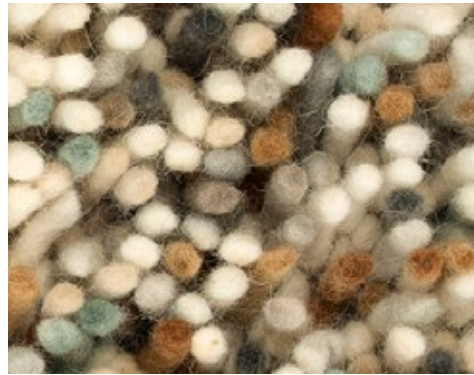
Young 061802

# Pop Art

axminster woven - pure new wool  
total weight ca 4000 gr/m<sup>2</sup>  
pile weight ca 2600 gr/m<sup>2</sup>  
pile height ca 15/40 mm  
available sizes:  
140x200 cm 4'7" x 6'7"  
160x230 cm 5'3" x 7'6"  
200x280 cm 6'7" x 9'2"  
custom sizes on request



Pop Art 066904



Pop Art 066901



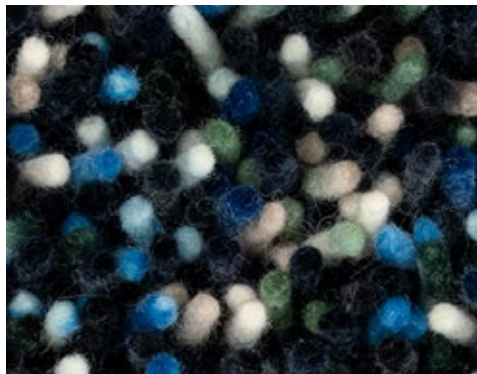
Pop Art 066914



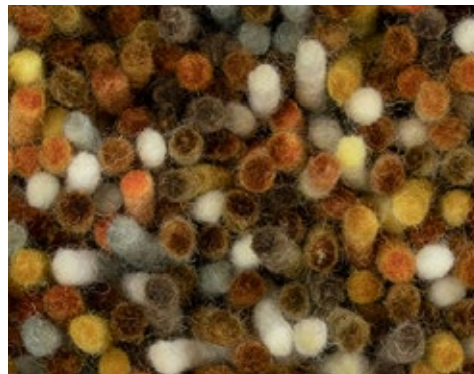
Pop Art 066907



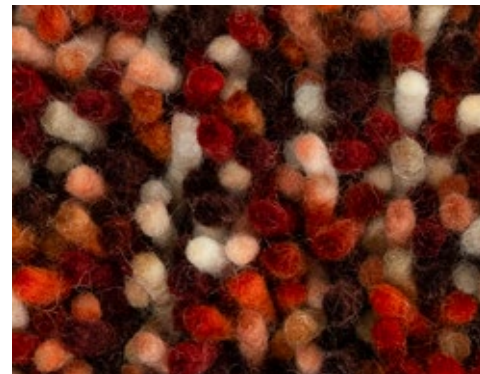
Pop Art 066902



Pop Art 066908



Pop Art 066926



Pop Art 066900



# Dots

axminster woven - pure new wool  
total weight ca 4500 gr/m<sup>2</sup>  
pile weight ca 3000 gr/m<sup>2</sup>  
pile height ca 25/30 mm  
available sizes:  
140x200 cm 4'7" x 6'7"  
170x240 cm 5'7" x 7'10"  
200x300 cm 6'7" x 9'8"  
250x350 cm 8'2" x 11'6"  
custom sizes on request



Dots 170537



Dots 170523



Dots 170547



Dots 170531



Dots 170528



Dots 170534



Dots 170401



Dots 170501



Dots 170504



Dots 170405



Dots 170411



Dots 170213



Rocks 070537



Rocks 070523



Rocks 070547



Rocks 070531



Rocks 070528



Rocks 070534



Rocks 070401



Rocks 070501



Rocks 070504



Rocks 070405



Rocks 070411



Rocks 070213

# Rocks

axminster woven - pure new wool  
 total weight ca 5500 gr/m2  
 pile weight ca 4000 gr/m2  
 pile height ca 20/50 mm  
 available sizes:  
 140x200 cm 4'7" x 6'7"  
 170x240 cm 5'7" x 7'10"  
 200x300 cm 6'7" x 9'8"  
 250x300 cm 8'2" x 9'8"  
 250x350 cm 8'2" x 11'6"  
 custom sizes on request



# Yarns

A large proportion of the rugs in B&C's collection are made using yarns that we have developed ourselves over the years. The development of these fibers enables us to make rugs in which the yarn rather than the design determines the appearance of the rug.

Through our years of experience and constant development in this area, we can proudly say that we have developed materials that show the clear signature of B&C. We have developed yarns that get their unique look from the way they are dyed, felted or spun.

This development is an essential part of the design process, where a lot of attention is paid to the color, material thickness, material composition, etc. A minimal adjustment in one of these aspects can result in a maximum difference in the appearance of the rug that is eventually brought into the collection.





# Origin

axminster woven - pure new wool  
**origin low**  
 total weight ca 3160 gr/m2 (low pile)  
 pile weight ca 1780 gr/m2 (low pile)  
 pile height ca 18/19 mm (low pile)  
 available sizes:  
 140x200 cm 4'7" x 6'7"  
 170x240 cm 5'7" x 7'10"  
 200x300 cm 6'7" x 9'8"  
 custom sizes on request

axminster woven - pure new wool  
**origin high**  
 total weight ca 4400 gr/m2 (high pile)  
 pile weight ca 3000 gr/m2 (high pile)  
 pile height ca 15/35 mm (high pile)  
 available sizes:  
 140x200 cm 4'7" x 6'7"  
 170x240 cm 5'7" x 7'10"  
 200x300 cm 6'7" x 9'8"  
 custom sizes on request

tufted - pure new wool  
**origin loop**  
 total weight ca 4150 gr/m2 (loop)  
 pile weight ca 2800 gr/m2 (loop)  
 pile height ca 30 mm (loop)  
 available sizes:  
 140x200 cm 4'7" x 6'7"  
 170x240 cm 5'7" x 7'10"  
 200x300 cm 6'7" x 9'8"  
 250x350 cm 8'2" x 11'6"  
 custom sizes on request



Origin low 066004



Origin high 066104



Origin loop 066204



Origin low 066001



Origin high 066101



Origin loop 066201



Origin low 066005



Origin high 066105



Origin loop 066205

# Gravel

axminster woven - pure new wool  
total weight ca 4400 gr/m<sup>2</sup>  
pile weight ca 3000 gr/m<sup>2</sup>  
pile height ca 15/35 mm  
available sizes:  
140x200 cm 4'7" x 6'7"  
170x240 cm 5'7" x 7'10"  
200x300 cm 6'7" x 9'8"  
250x350 cm 8'2" x 11'6"  
custom sizes on request



Gravel 068009



Gravel 068209



Gravel 068201



Gravel 068001



Gravel 068001



# Arch

tufted - pure new wool  
 total weight ca 4150 gr/m<sup>2</sup>  
 pile weight ca 2800 gr/m<sup>2</sup>  
 pile height ca 30 mm  
 available sizes:  
 140x200 cm 4'7" x 6'7"  
 170x240 cm 5'7" x 7'10"  
 200x300 cm 6'7" x 9'8"  
 250x350 cm 8'2" x 11'6"  
 custom sizes on request



Arch 067004



Arch 067001



Arch 067005



Arch 067007

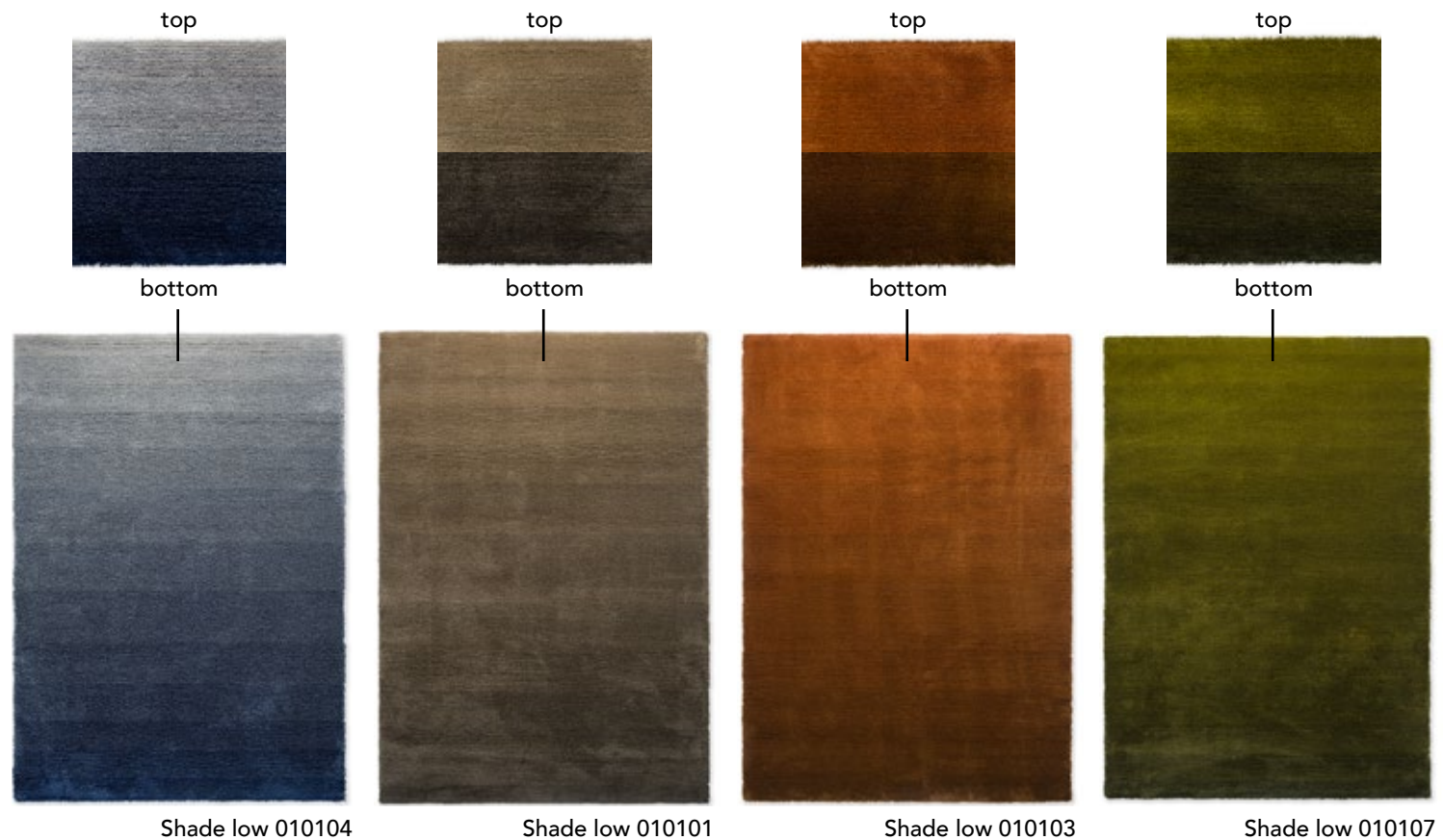


Arch 067006



Arch 067002



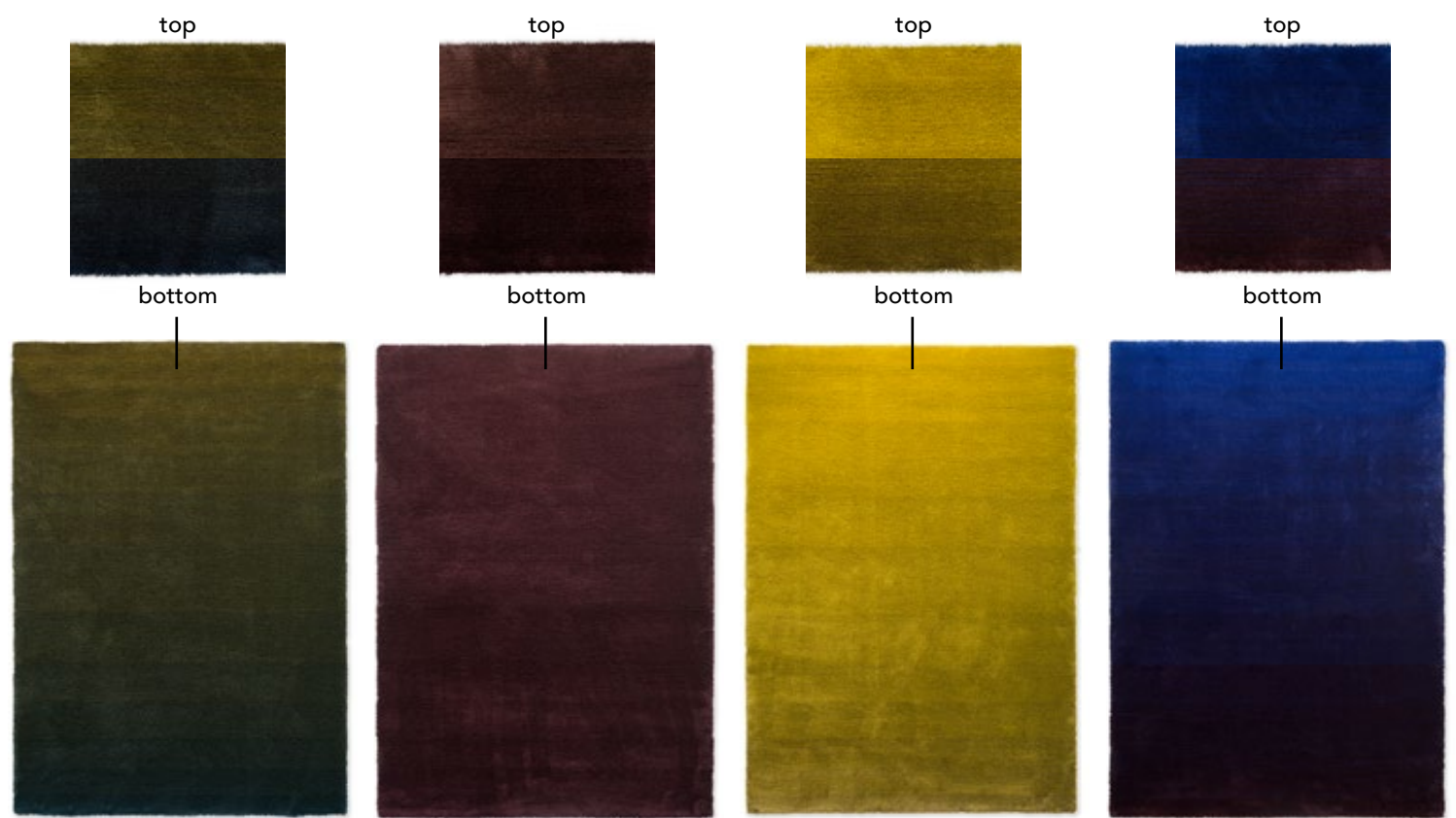


Shade low 010104

Shade low 010101

Shade low 010103

Shade low 010107



Shade low 010108

Shade low 010100

Shade low 010106

Shade low 010108

# Shade low

tufted - pure new wool  
 total weight ca 4000 gr/m<sup>2</sup>  
 pile weight ca 2650 gr/m<sup>2</sup>  
 pile height ca 18 mm  
 available sizes:  
 140x200 cm 4'7" x 7'10"  
 170x240 cm 5'3" x 9'2"  
 200x300 cm 6'7" x 11'6"  
 250x350 cm 8'2" x 14'5"  
 custom sizes on request



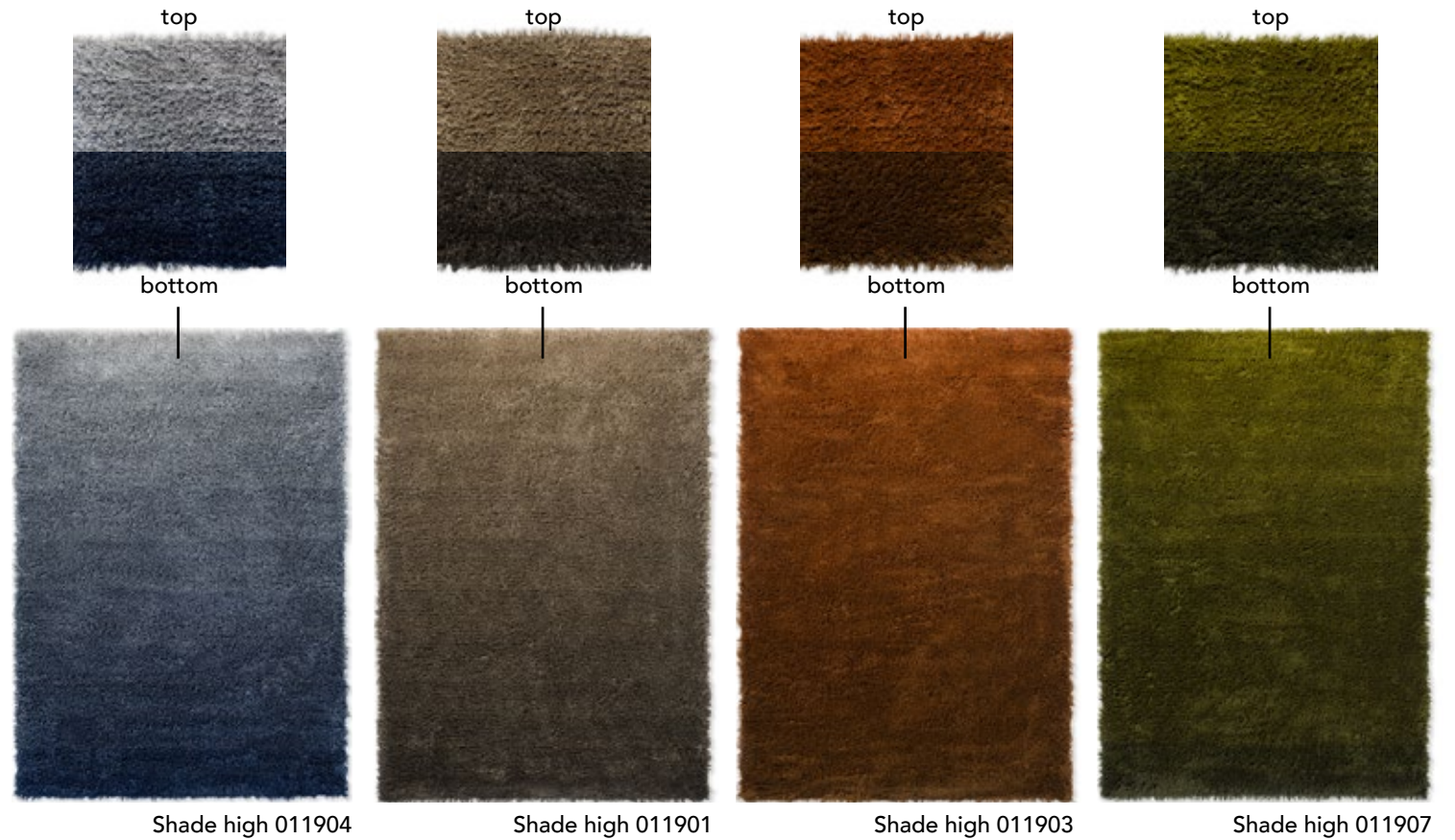
Shade low 010107

# Shade high

tufted - pure new wool  
 total weight ca 3750 gr/m<sup>2</sup>  
 pile weight ca 2380 gr/m<sup>2</sup>  
 pile height ca 45 mm  
 available sizes:  
 140x200 cm 4'7" x 7'10"  
 170x240 cm 5'3" x 9'2"  
 200x300 cm 6'7" x 11'6"  
 250x350 cm 8'2" x 14'5"  
 custom sizes on request



Shade high 011908

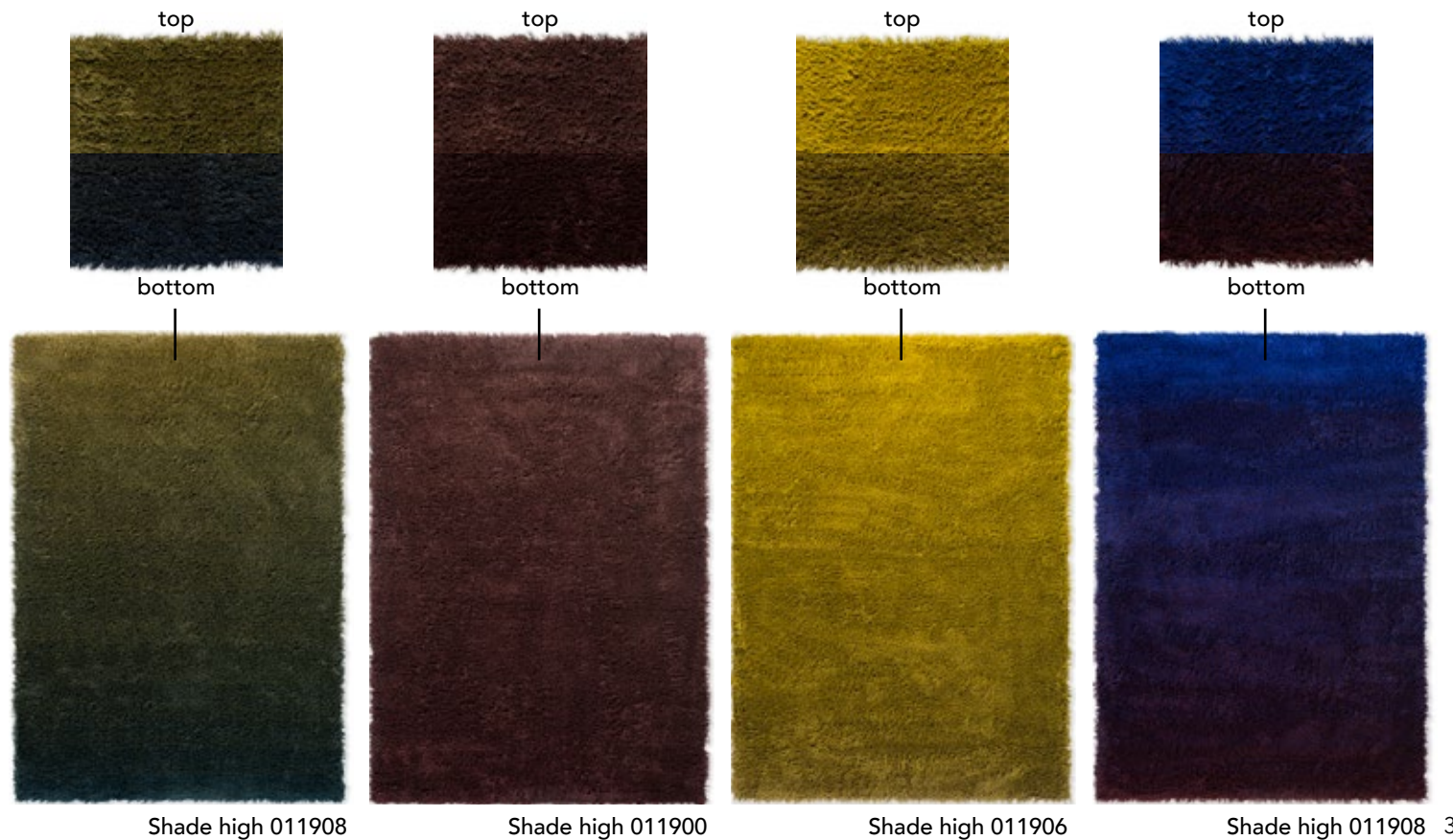


Shade high 011904

Shade high 011901

Shade high 011903

Shade high 011907



Shade high 011908

Shade high 011900

Shade high 011906

Shade high 011908

# Mural form, modest & bold

tufted - pure new wool  
total weight ca 3500 gr/m<sup>2</sup>  
pile weight ca 2000 gr/m<sup>2</sup>  
pile height ca 17 mm  
available sizes:  
140x240 cm 4'7" x 7'10"  
160x280 cm 5'3" x 9'2"  
200x350 cm 6'7" x 11'6"  
250x440 cm 8'2" x 14'5"  
each design available  
in all 3 colours



34 Mural form | forest 121107

Mural modest | burgundy 121100

Mural bold | cement 121104



Mural form | forest 121107



# Twinsset | Urban Cut & Loop

tufted - pure new wool/ Tencel™  
total weight ca 3700 gr/m2  
pile weight ca 2200 gr/m2  
pile height ca 17 mm  
available sizes:  
140x200 cm 4'7" x 6'7"  
170x240 cm 5'7" x 7'10"  
200x300 cm 6'7" x 9'8"  
250x350 cm 8'2" x 11'6"  
custom sizes on request  
available in a range of other colours



Urban 022104 | Cut 021504 | Loop 021404



Urban 022101 | Cut 021501 | Loop 021401



Urban 022131 | Cut 021531 | Loop 021431



Urban 022152 | Cut 021552 | Loop 021452



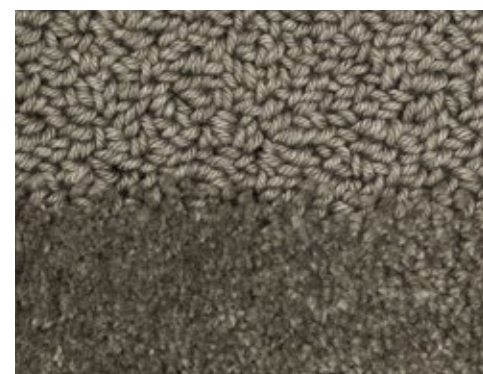
Urban 022106 | Cut 021506 | Loop 021406



Urban 022116 | Cut 021516 | Loop 021416



Urban 022107 | Cut 021507 | Loop 021407



Urban 022134 | Cut 021534 | Loop 021434



Urban 022135 | Cut 021535 | Loop 021435



# Handmade

A large part of the B&C collection is handmade. We have rugs that are knotted, woven or tufted by hand in different parts of the world.

The handknotted carpets gain their quality and beautiful appearance through the use of traditional techniques in combination with the most beautiful yarns. The craftsmanship and the traditional way of working catch the eye and allow us to go a step further in the development of the designs.

In addition to the handknotted rugs, we have rugs that are woven by hand. These rugs are characterized by the technique of flat weaving. We are always looking for new techniques and possibilities within flat weaving. For example, we have developed a double-weave technique that makes it possible to use large open-weave structures in the designs.

Furthermore, we have handtufted rugs. This quality offers totally different possibilities. When tufting, for instance a loop pile or a cut pile can be chosen. These two can also be combined very well in different designs to achieve a very surprising result.

All of these techniques are mastered by our partners already for generations onwards. The love for these skills, materials and colors are visible in each and every rug.

# Pebble

handwoven - wool & flax  
total weight ca 4500 gr/m<sup>2</sup>  
no pile due to flatweave structure  
available sizes:  
140x200 cm 4'7" x 6'7"  
170x240 cm 5'7" x 7'10"  
200x300 cm 6'7" x 9'8"  
250x350 cm 8'2" x 11'6"  
custom sizes on request  
reversible



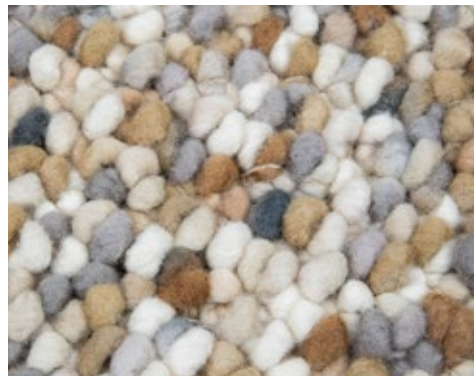
Pebble fresh green 129807



Pebble touch of orange 129803



Pebble natural sand 129811



Pebble beach beige 129801



Pebble cool grey 129804



Pebble natural sand 129811 41



# Cobble

handwoven - wool & flax  
total weight ca 4200 gr/m<sup>2</sup>  
no pile due to flatweave structure  
available sizes:  
140x200 cm 4'7" x 6'7"  
170x240 cm 5'7" x 7'10"  
200x300 cm 6'7" x 9'8"  
250x350 cm 8'2" x 11'6"  
custom sizes on request



Cobble 029201



Cobble 029204



Cobble 029206



Cobble 029207



Cobble 029208

# Marble

handwoven - wool & flax  
total weight ca 4500 gr/m2  
no pile due to flatweave structure  
available sizes:  
140x200 cm 4'7" x 6'7"  
170x240 cm 5'7" x 7'10"  
200x300 cm 6'7" x 9'8"  
250x350 cm 8'2" x 11'6"  
custom sizes on request



Marble 029501



Marble 029503



Marble 029517



Marble 029528



Marble 029537



Marble 029523



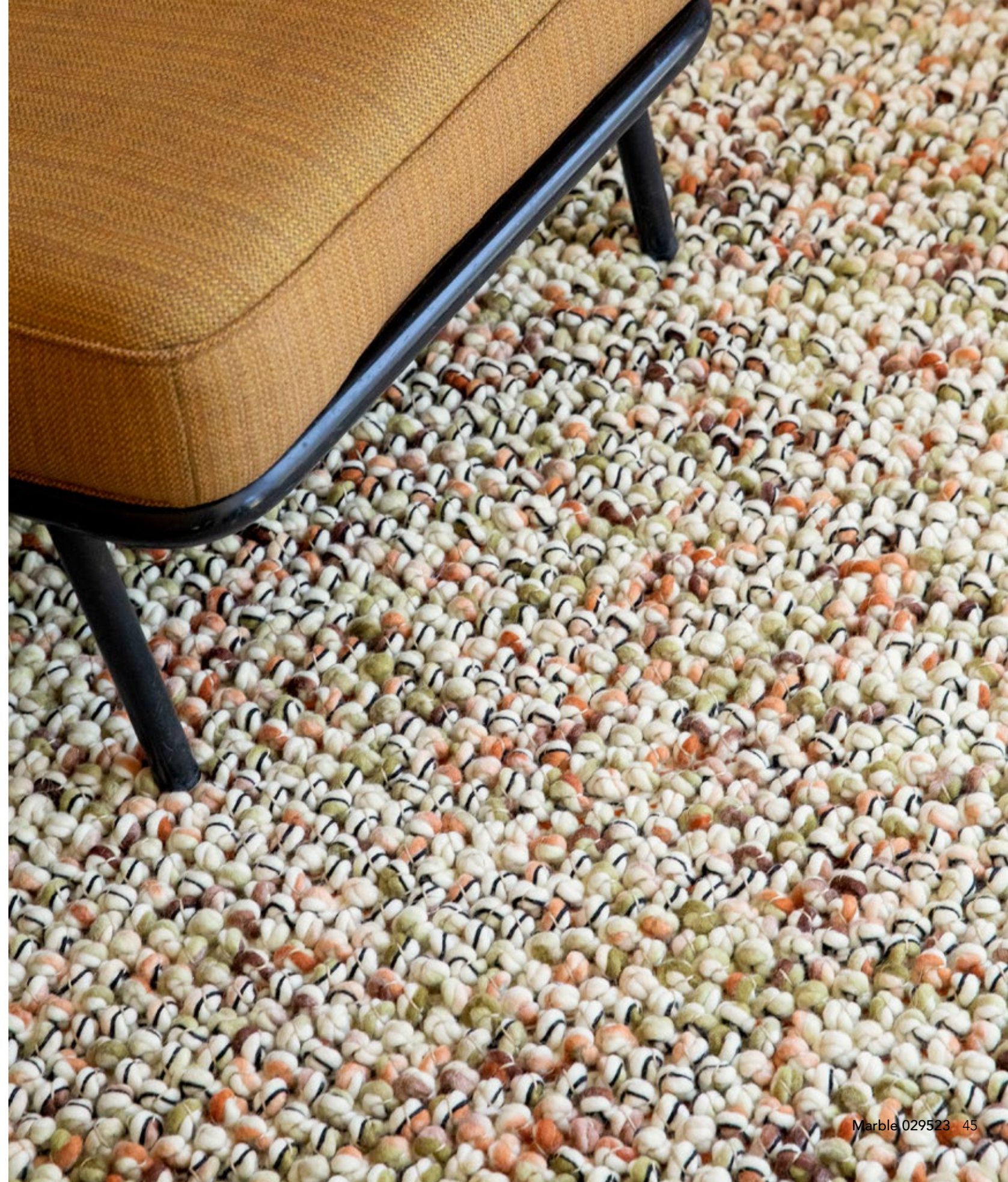
Marble 029534



Marble 029547



Marble 029500



Marble 029523 45



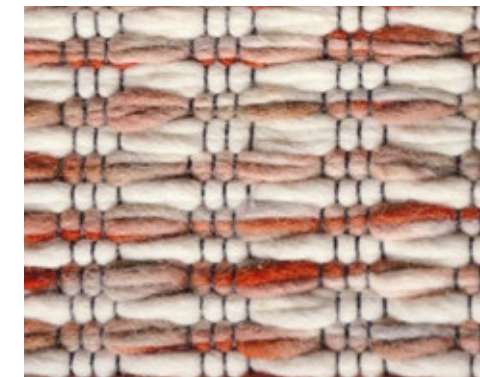


# Grain

handwoven – pure new wool  
 total weight ca 2200 gr/m<sup>2</sup>  
 no pile due to flatweave structure  
 available sizes:  
 140 x 200 cm 4'7" x 6'7"  
 160 x 230 cm 5'3" x 7'6"  
 200 x 280 cm 6'7" x 9'2"  
 250 x 350 cm 8'2" x 11'6"  
 custom sizes are available  
 reversible



Grain 013501



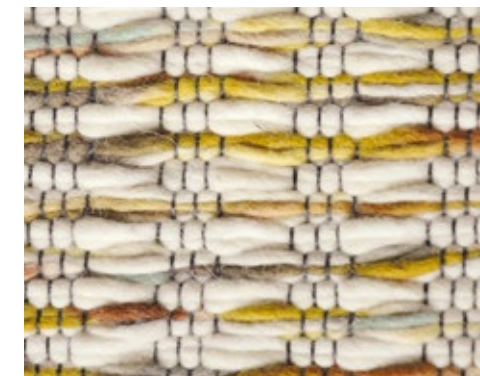
Grain 013502



Grain 013504



Grain 013505



Grain 013506



Grain 013507 47

# Atelier

handwoven - pure new wool  
total weight ca 2500 gr/m2  
no pile due to flatweave structure  
available sizes:  
140x200 cm 4'7" x 6'7"  
160x230 cm 5'3" x 7'6"  
200x280 cm 6'7" x 9'2"  
250x350 cm 8'2" x 11'6"  
custom sizes on request



Atelier twill 049201



Atelier twill 049206



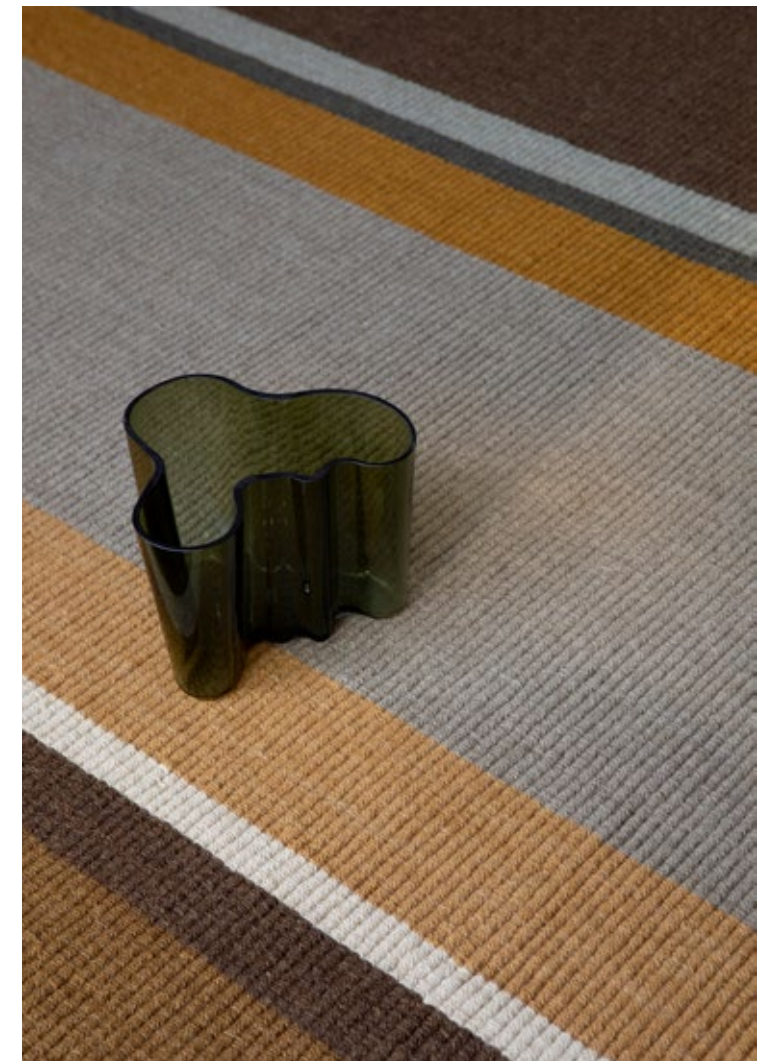
Atelier twill 049207



Atelier twill 049201 49

# Artisan | Stack ochre & green

handloom - pure new wool  
total weight ca 4000 gr/m<sup>2</sup>  
pile weight ca 2700 gr/m<sup>2</sup>  
no pile due to flatweave structure  
available sizes:  
140x200 cm 4'7" x 6'7"  
160x230 cm 5'3" x 7'6"  
200x280 cm 6'7" x 9'2"  
250x350 cm 8'2" x 11'6"



Stack ochre 090201



Stack green 090207

# Artisan | Focus dawn & dusk

handloom - pure new wool  
total weight ca 4000 gr/m2  
pile weight ca 2700 gr/m2  
no pile due to flatweave structure  
available sizes:  
140x200 cm 4'7" x 6'7"  
160x230 cm 5'3" x 7'6"  
200x280 cm 6'7" x 9'2"  
250x350 cm 8'2" x 11'6"





# Decor | Groove electric blue & burnt orange

handtufted - pure new wool  
total weight ca 4500 gr/m<sup>2</sup>  
pile weight ca 2500 gr/m<sup>2</sup>  
pile height ca 12 mm  
available sizes:  
140x200 cm 4'7" x 6'7"  
160x230 cm 5'3" x 7'6"  
200x280 cm 6'7" x 9'2"  
250x350 cm 8'2" x 11'6"  
custom sizes on request



Groove electric blue 097708

Groove burnt orange 097703

# Decor | Milano royal blue & golden ochre

handtufted - pure new wool  
total weight ca 4500 gr/m<sup>2</sup>  
pile weight ca 2500 gr/m<sup>2</sup>  
pile height ca 12 mm  
available sizes:  
140x200 cm 4'7" x 6'7"  
160x230 cm 5'3" x 7'6"  
200x280 cm 6'7" x 9'2"  
250x350 cm 8'2" x 11'6"  
custom sizes on request



56 Milano royal blue 097808

Milano golden ochre 097806



# Decor | Riff straw yellow & water blue

handtufted - pure new wool  
total weight ca 4500 gr/m2  
pile weight ca 2500 gr/m2  
pile height ca 8-12 mm  
available sizes:  
140x200 cm 4'7" x 6'7"  
160x230 cm 5'3" x 7'6"  
200x280 cm 6'7" x 9'2"  
250x350 cm 8'2" x 11'6"  
custom sizes on request



Riff straw yellow 098206



Riff water blue 098208

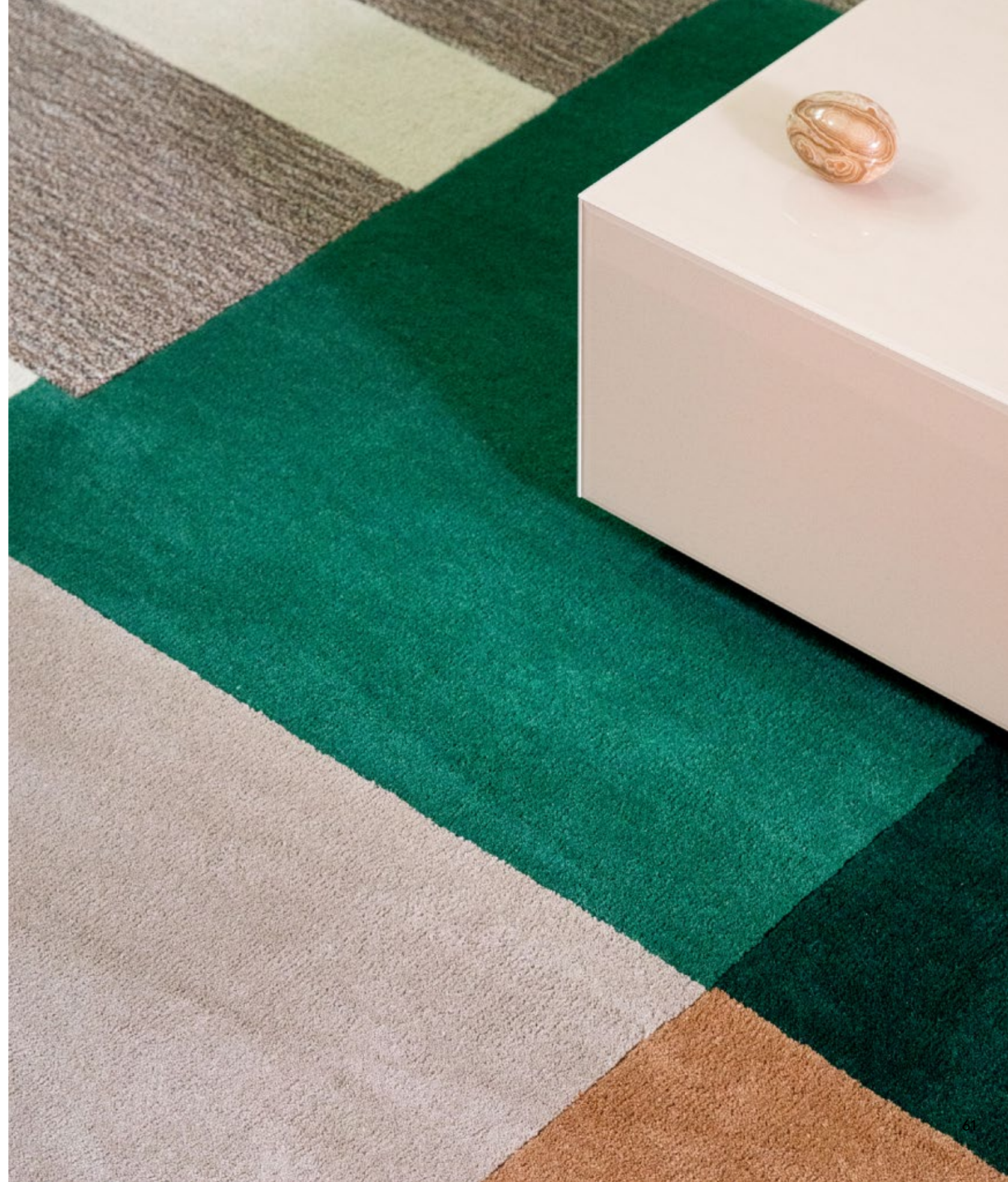
# Decor | Bass & Beat

handtufted - pure new wool  
total weight ca 4500 gr/m<sup>2</sup>  
pile weight ca 2500 gr/m<sup>2</sup>  
pile height ca 12 mm  
available sizes:  
140x200 cm 4'7" x 6'7"  
160x230 cm 5'3" x 7'6"  
200x280 cm 6'7" x 9'2"  
250x350 cm 8'2" x 11'6"  
custom sizes on request



60 Bass silent beige 094201

Beat kaleidoscope 094809







# Decor | Flow

handtufted - pure new wool  
total weight ca 4500 gr/m2  
pile weight ca 2500 gr/m2  
pile height ca 12 mm  
available sizes:  
140x200 cm 4'7" x 6'7"  
160x230 cm 5'3" x 7'6"  
200x280 cm 6'7" x 9'2"  
250x350 cm 8'2" x 11'6"  
custom sizes on request



Flow sand 091309

Flow caviar 091305

# Decor | Order

handtufted - pure new wool & viscose

total weight ca 4500 gr/m<sup>2</sup>

pile weight ca 2500 gr/m<sup>2</sup>

pile height ca 12 mm

available sizes:

140x200 cm 4'7" x 6'7"

160x230 cm 5'3" x 7'6"

200x280 cm 6'7" x 9'2"

250x350 cm 8'2" x 11'6"

custom sizes on request



# Decor | Rhythm

handtufted - pure new wool  
total weight ca 4500 gr/m2  
pile weight ca 2500 gr/m2  
pile height ca 12 mm  
available sizes:  
140x200 cm 4'7" x 6'7"  
160x230 cm 5'3" x 7'6"  
200x280 cm 6'7" x 9'2"  
250x350 cm 8'2" x 11'6"  
custom sizes on request



66 Rhythm tangerine 098003

# Decor | State

handtufted - pure new wool & viscose  
total weight ca 4500 gr/m2  
pile weight ca 2500 gr/m2  
pile height ca 12 mm  
available sizes:  
140x200 cm 4'7" x 6'7"  
160x230 cm 5'3" x 7'6"  
200x280 cm 6'7" x 9'2"  
250x350 cm 8'2" x 11'6"  
custom sizes on request



State soft green 097107





# Decor | Plateau

handtufted - pure new wool  
total weight ca 4500 gr/m2  
pile weight ca 2500 gr/m2  
pile height ca 12 mm  
available sizes:  
140x200 cm 4'7" x 6'7"  
160x230 cm 5'3" x 7'6"  
200x280 cm 6'7" x 9'2"  
250x350 cm 8'2" x 11'6"  
custom sizes on request



Plateau moss 091907



Plateau terra 091903

# Decor | Primi

handtufted - pure new wool  
total weight ca 4500 gr/m2  
pile weight ca 2500 gr/m2  
pile height ca 12 mm  
available sizes:  
140x200 cm 4'7" x 6'7"  
160x230 cm 5'3" x 7'6"  
200x280 cm 6'7" x 9'2"  
250x350 cm 8'2" x 11'6"  
custom sizes on request





# Decor | Scape woolwhite & natural grey

handtufted - pure new wool  
total weight ca 4500 gr/m2  
pile weight ca 2500 gr/m2  
pile height ca 12 mm  
available sizes:  
140x200 cm 4'7" x 6'7"  
160x230 cm 5'3" x 7'6"  
200x280 cm 6'7" x 9'2"  
250x350 cm 8'2" x 11'6"  
custom sizes on request



Scape woolwhite 095001



Scape natural grey 095004



# Design Studio

All Brink & Campman rugs are created in the design studio, which we proudly refer to as the heart of our company.

Our designers develop the unique collections, starting with a beautiful yarn, inspired by trends, or fascinated by the possibilities of a technique.

In the design process, we work with great passion and creativity, but we do not lose sight of craftsmanship, quality and sustainability.

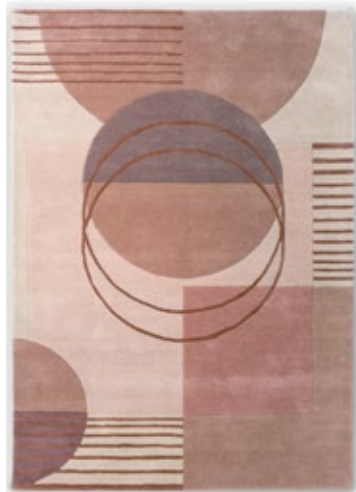
We are convinced that only together, and in combination with our knowledge and expertise, can all these aspects lead to the high-quality rugs we love to make.

The fact that we bring a new collection every year gives us both the opportunity and the challenge to keep developing, renewing and improving.

An important aspect that we are still working on in the design studio and that we would like to develop even further is sustainability. The fact that we mostly work with natural materials such as wool is of course already an advantage but it is our goal to be on the lookout for opportunities to reduce our ecological footprint.

# Decor | Lola

handtufted - pure new wool  
total weight ca 4500 gr/m<sup>2</sup>  
pile weight ca 2500 gr/m<sup>2</sup>  
pile height ca 12 mm  
available sizes:  
140x200 cm 4'7" x 6'7"  
160x230 cm 5'3" x 7'6"  
200x280 cm 6'7" x 9'2"  
250x350 cm 8'2" x 11'6"  
custom sizes on request







# Decor | Miller spring & fall

handtufted - pure new wool  
total weight ca 4500 gr/m<sup>2</sup>  
pile weight ca 2500 gr/m<sup>2</sup>  
pile height ca 12 mm  
available sizes:  
140x200 cm 4'7" x 6'7"  
160x230 cm 5'3" x 7'6"  
200x280 cm 6'7" x 9'2"  
250x350 cm 8'2" x 11'6"  
custom sizes on request

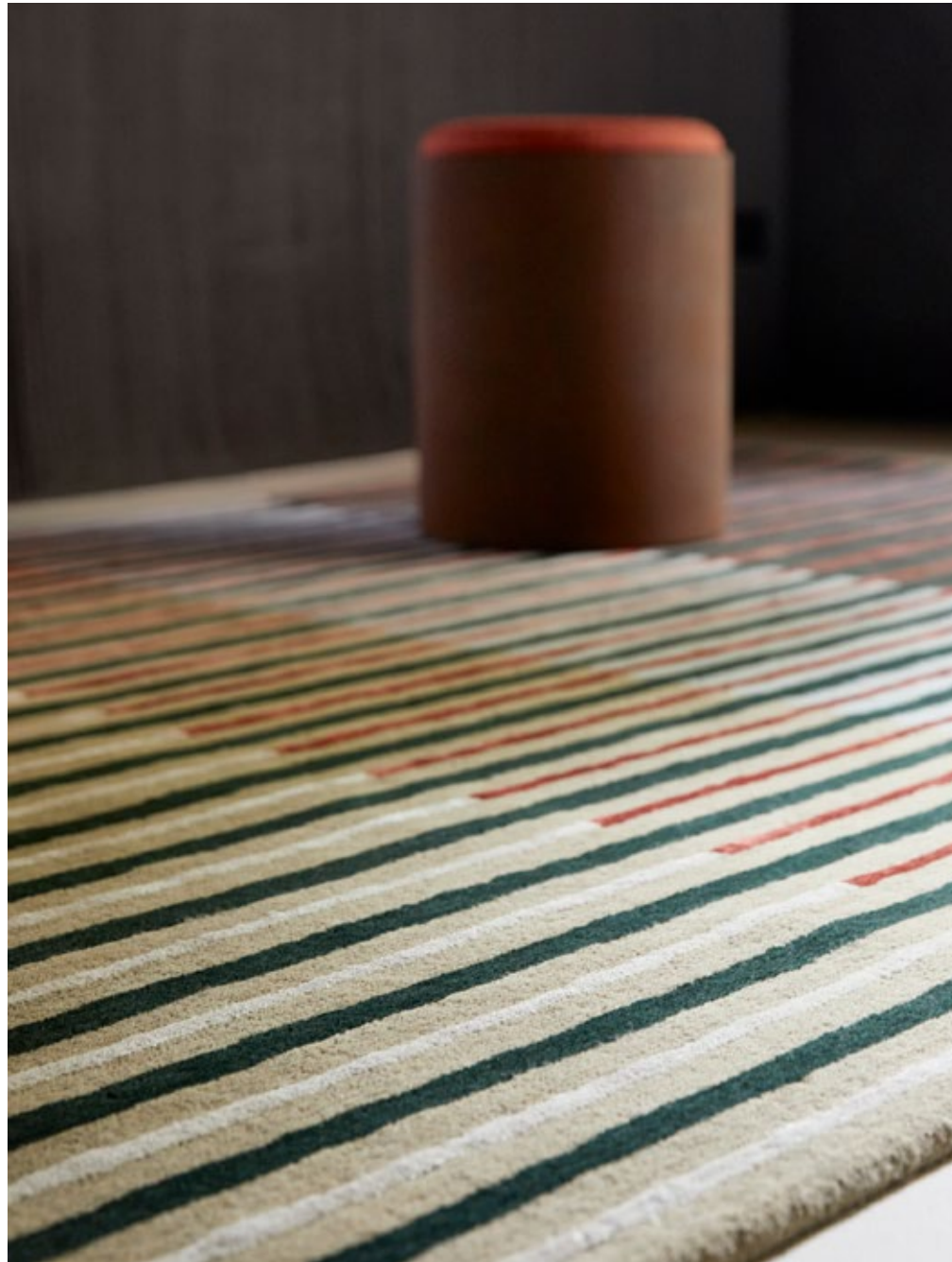


Miller spring 095108

Miller fall 095105

# Decor | Proof

handtufted - pure new wool & viscose  
total weight ca 4500 gr/m2  
pile weight ca 2500 gr/m2  
pile height ca 12 mm  
available sizes:  
140x200 cm 4'7" x 6'7"  
160x230 cm 5'3" x 7'6"  
200x280 cm 6'7" x 9'2"  
250x350 cm 8'2" x 11'6"  
custom sizes on request





# Decor | Cosmo greens & red pale green

handtufted - pure new wool  
total weight ca 4500 gr/m<sup>2</sup>  
pile weight ca 2500 gr/m<sup>2</sup>  
pile height ca 12 mm  
available sizes:  
140x200 cm 4'7" x 6'7"  
160x230 cm 5'3" x 7'6"  
200x280 cm 6'7" x 9'2"  
250x350 cm 8'2" x 11'6"  
custom sizes on request



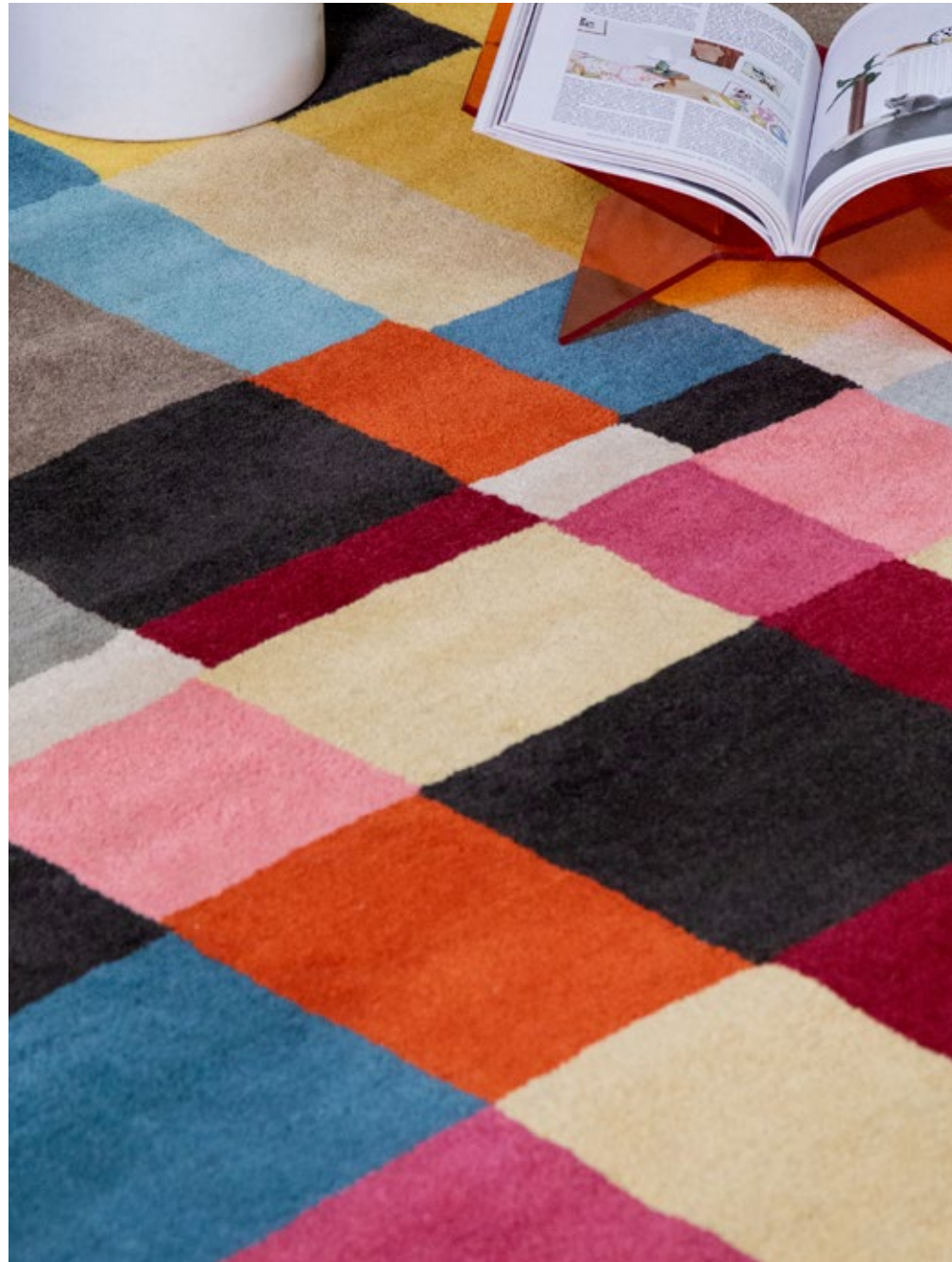
Cosmo greens 095207



Cosmo red pale green 095203

# Estella | Domino

handtufted - pure new wool  
total weight ca 4500 gr/m<sup>2</sup>  
pile weight ca 2500 gr/m<sup>2</sup>  
pile height ca 12 mm  
available sizes:  
140x200 cm 4'7" x 6'7"  
160x230 cm 5'3" x 7'6"  
200x280 cm 6'7" x 9'2"  
250x350 cm 8'2" x 11'6"  
custom sizes on request





# Estella | Summer & Vases

handtufted - pure new wool  
total weight ca 4500 gr/m<sup>2</sup>  
pile weight ca 2500 gr/m<sup>2</sup>  
pile height ca 12 mm  
available sizes:  
140x200 cm 4'7" x 6'7"  
160x230 cm 5'3" x 7'6"  
200x280 cm 6'7" x 9'2"  
250x350 cm 8'2" x 11'6"  
custom sizes on request



Summer 85200



Vases 089502

# Estella | Submarine

handtufted - pure new wool & viscose  
total weight ca 4500 gr/m<sup>2</sup>  
pile weight ca 2500 gr/m<sup>2</sup>  
pile height ca 12 mm  
available sizes:  
140x200 cm 4'7" x 6'7"  
160x230 cm 5'3" x 7'6"  
200x280 cm 6'7" x 9'2"  
250x350 cm 8'2" x 11'6"  
custom sizes on request



88 Submarine 89405

Submarine 89408





# Yeti | Anapurna

handknotted | 60 knots - pure new wool & viscose  
total weight ca 4000 gr/m2  
pile weight ca 3400 gr/m2  
pile height ca 9 mm  
available sizes:  
140x200 cm 4'7" x 6'7"  
170x240 cm 5'7" x 7'10"  
200x300 cm 6'7" x 9'8"  
250x350 cm 8'2" x 11'6"  
custom sizes on request

\* made out of recycled yarn scraps therefore colors may differ slightly



Anapurna 51901



Anapurna 51904

# In/Outdoor

For the sunny season we have developed the bold and sportive DECK series in distinct colours. Let the spring and summer come and see the Deck in dazzling electric blue that reminds you of the Mediterranean sea, or the Deck spring green in a very vibrant green!

The successful LACE series has been complemented by the LACE tricolore series. Next to the subdued colour palette we have added three refined colourways. Beautiful colour combinations reminiscent of sun-drenched long evenings or groovy parties.

Both the DECK and the LACE series are hand-woven rugs and feature unique textures in which the enchanting colours perform at their best. The textures are soft to the touch and consist of woven recycled PET yarns that form an exciting pattern. The beautiful handwoven rugs can be used both indoors and outdoors and are reversible. They are durable, water resistant, and easy to clean.

You can lay the rugs where ever you like, they all add that special extra to the floor.

Enjoy your rug – enjoy the sun!







# Deck | In/Outdoor

total weight: ca 2030 gr/m<sup>2</sup>  
total height: ca 10 mm

available sizes:

140x200 4'7x6'7"

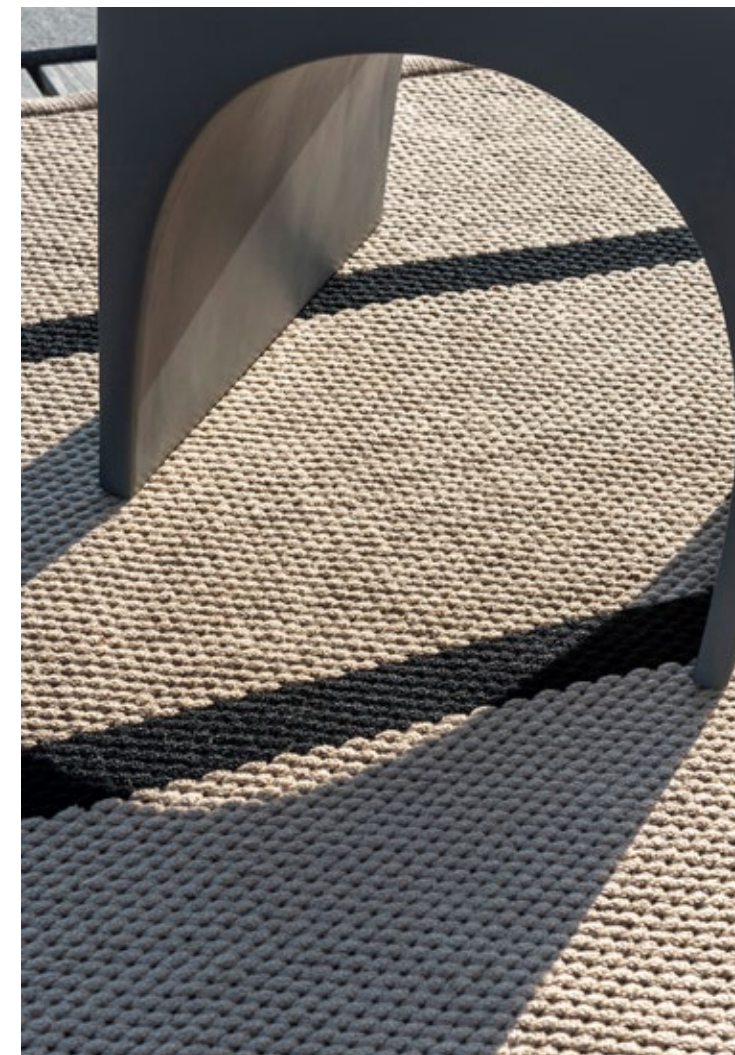
160x230 5'3x7'6"

200x280 6'7x9'2"

250x350 8'2x11'6"

custom sizes on request

made from recycled PET yarns  
water resistant & easy to clean  
reversible



Deck spring green 496607



Deck electric blue 496708



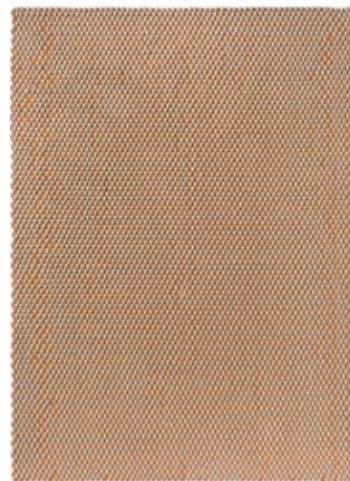
Deck spring green 496805

# Lace tricolore | In/Outdoor

total weight: ca 3050 gr/m<sup>2</sup>  
total height: ca 15 mm

available sizes:  
140x200 4'7x6'7"  
160x230 5'3x7'6"  
200x280 6'7x9'2"  
250x350 8'2x11'6"  
custom sizes on request

made from recycled PET yarns  
water resistant & easy to clean  
reversible



96 Lace white-sand-mango 496901

Lace terra-rust-green 496903

Lace thyme-grey-pink 496904



Lace terra-rust-green 496903 97

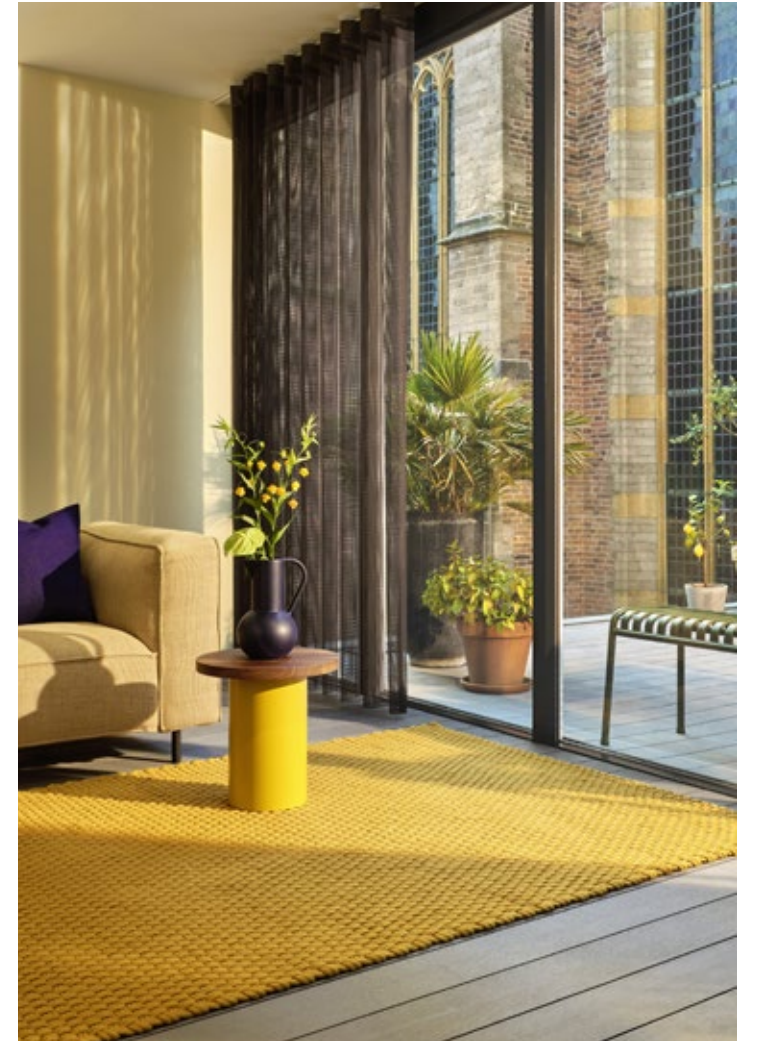


# Lace | In/Outdoor

total weight: ca 3050 gr/m2  
total height: ca 15 mm

available sizes:  
140x200 4'7x6'7"  
160x230 5'3x7'6"  
200x280 6'7x9'2"  
250x350 8'2x11'6"  
custom sizes on request

made from recycled PET yarns  
water resistant & easy to clean  
reversible



Lace white sand 497009



Lace sage grey-white sand 497201



Lace golden mustard 497006



Lace golden mustard-grey 497217



Lace thyme-pine 497207



Lace grey taupe 497004

# Brands

In addition to our own unique B&C collection, we develop and produce collections for worldwide renowned brands in the home interior and fashion world.

Our design studio works closely with the designers of these brands to ensure that together we can create highly recognizable collections. Each brand has its own distinctive style and goes through individual developments that keep us motivated to develop the most beautiful collections. The cooperation with these brands ensures that we can proudly offer a wide range of rugs where, just as with the B&C collection, quality and eye for detail are of great importance.



# Laura Ashley



Cleavers natural round  
080901



Cleavers seaspray round  
080908



Cleavers duck egg round  
080907



Cleavers dark steel round  
080904



Cleavers natural  
080901



Cleavers seaspray  
080908



Cleavers duck egg  
080907



Cleavers dark steel  
080904



Gosford cranberry  
081300



Gosford cranberry round  
081300



Tulips china blue  
082208

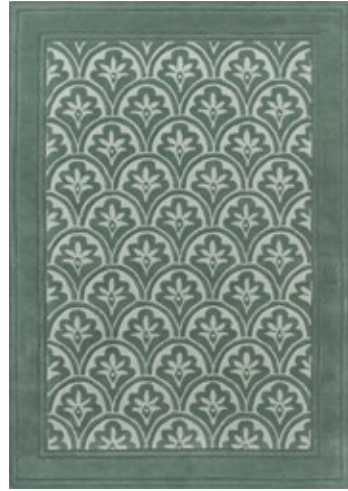


Parterre sage  
081707





Catarina gold  
080806



Catarina fern  
080807



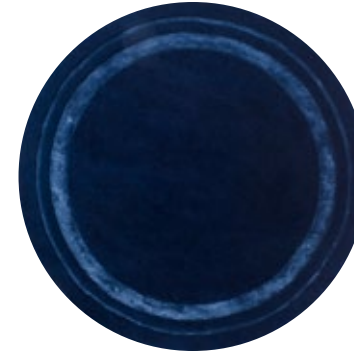
Eaton seaspray  
081008



Eaton charcoal  
081004



Redbrook midnight  
081808



Redbrook midnight round  
081808



Rye natural  
081901



Rye sage  
081907



Redbrook silver  
081804



Redbrook silver round  
081804



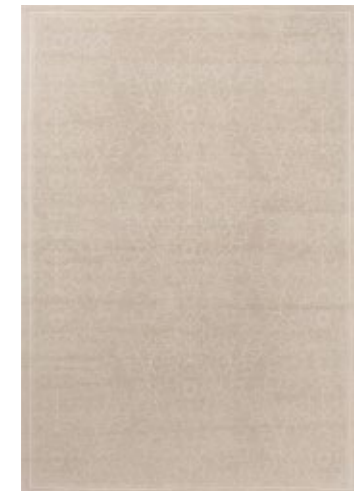
Redbrook blush  
081802



Redbrook blush round  
081802



Mari mineral green  
081507



Silchester dove grey  
081101



Silchester pale sage  
081107



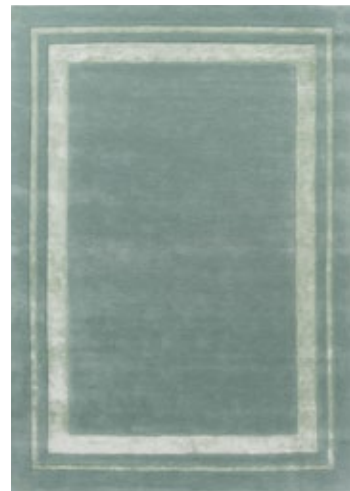
Josette dove grey  
081401



Redbrook hazelnut  
081801



Redbrook hazelnut round  
081801



Redbrook duck egg  
081807



Redbrook duck egg round  
081807



Newborough steel  
081604



Newborough pale gold  
081606



Newborough dark seaspray  
081608

# Morris & Co



Bower twining vine green  
128207



Bower indigo  
128208



Bird tump green  
128307



Bird webb's blue  
128308



Trent red house  
128503



Trent madder red I webb's blue  
127510



Bluebell leafy arbour green  
127607



Elmcote gold  
127806

# Morris & Co



Pimpernel indigo  
028818



Pimpernel bullrush  
028808



Pimpernel aubergine  
028805



Pure Pimpernel linen  
028701



Seaweed teal  
127008



Seaweed ink  
028008



Artichoke amber I charcoal  
127103



Artichoke mineral  
127108



Strawberry Thief crimson  
027700



Strawberry Thief indigo  
027708



Strawberry Thief slate  
027718



Pure Strawberry Thief ink  
028105



Acanthus forest  
126900



Snakeshead indigo  
127208



Wilhelmina linen I mustard  
127401





# Sanderson



Ancient Canopy fawn I olive green 146701



Ancient Canopy forest green 146708



Robin's Wood russet brown 146501



Robin's Wood russet brown 146501 round



Robin's Wood forest green 146508



Robin's Wood forest green 146508 round



Woodland Glade linen I russet brown 146801



Woodland Glade gold 146806



Woodland Glade damson red 146800



Forest of Dean forest green 146907

# Sanderson



Foraging indigo  
146618



Foraging indigo  
146618 round



Anthea china blue  
047107



Rain Forest tropical nights  
050708



Elsdon linden  
044006



Abstract linden I silver  
045401



Stapleton Park navy I burnt orange  
045318



Stapleton Park rosewood  
045302



Dahlia & Rosehip teal  
050608



Rose & Peony cerise  
045005



Manila green  
046407



Poppies red I orange  
045700



Amanpuri stone  
145101



Amanpuri grey I plum  
145104



Cantaloupe ochre  
145206



# Orla Kiely



Sunflower olive  
060007



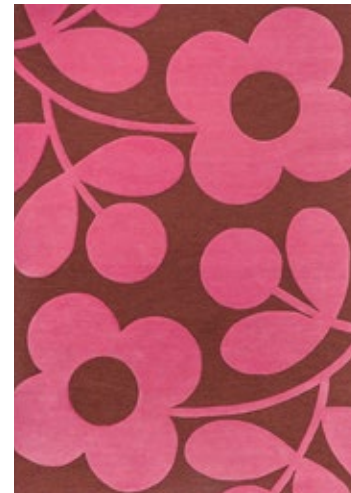
Flower Spot ecru I black  
158409



Flower Spot pink I red  
158400



Flower Spot chestnut I violet  
158401



Sprig Stem paprika  
063900



Sprig Stem marine  
063908



Solid Stem  
158309



Solid Stem fern  
158307



Wild Rose fawn  
159605



Striped Tulp seagrass  
160307



Multi Stem autumn  
059503



Puzzle Flower slate  
060905

# Orla Kiely



Geo Flower denim  
060608



Geo Flower graphite  
060605



Optical Flower dandelion  
061206



Optical Flower teal  
061207



Sunflower Yellow  
060006



Sunflower Pink  
060005



Stem black  
059803



Cut Stem multi  
061405



Giant Linear Stem  
059404



Giant Multi Stem  
059205



Classic Multi Stem  
059505



Multi Stem kingfisher  
059507



Linear Stem slate  
060505



Spot Flower multi  
060404



# Wedgwood



Folia 2.0 round mink  
038902



Folia 2.0 round cool grey  
038904



Folia round stone  
038301



Folia round grey  
038305



Folia mink  
038902



Folia 2.0 cool grey  
038904



Folia stone  
038301



Folia grey  
038305



Waterlily midnight pond  
038608



Waterlily round midnight pond  
038608



Waterlily dusty rose  
038602



Waterlily round dusty rose  
038602



Renaissance beige  
039001



Renaissance blue  
039008



Hummingbird grey  
037804



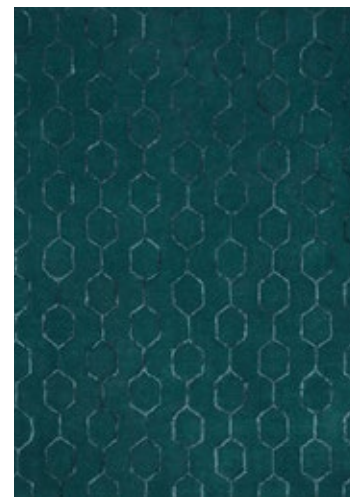
Hummingbird blue  
037808



Hummingbird navy  
037818



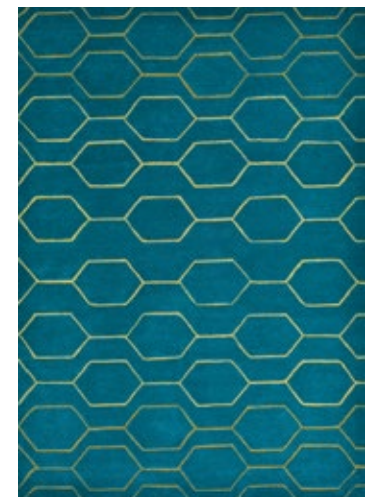
Gio mineral  
039108



Gio teal  
039107



Gio noir  
039105



Arris teal  
037307



Wild Strawberry tonal  
038201



Wild Strawberry cream  
038108



Paeonia coral  
037902



Arris grey  
037304



Fabled Floral grey  
037504



Fabled Floral navy  
037508



Tonquin blue  
037008



Tonquin charcoal  
037005

# Ted Baker



Shaped Magnolia light pink  
162302



Shaped Magnolia burgundy  
162303



Linear Floral blue  
162508



Feathers natural  
162404



Landscape Toile light pink  
162602



Landscape Toile light blue  
162608



Baroque yellow  
162906



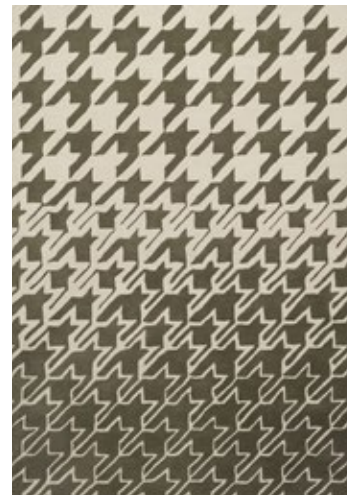
Baroque pink  
162902



Woodblock grey  
163001



Woodblock red  
163003



Houndstooth grey  
162804



Houndstooth dark blue  
162808





Zodiac Aries  
161105



Zodiac Taurus  
161205



Zodiac Gemini  
161305



Zodiac Cancer  
161405



Zodiac Leo  
161505



Zodiac Virgo  
161605



Zodiac Libra  
161705



Zodiac Scorpio  
161805



Zodiac Sagittarius  
161905



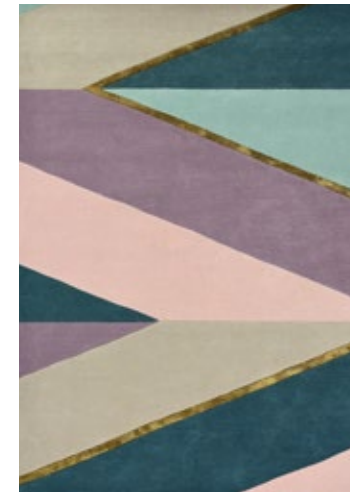
Zodiac Capricorn  
162005



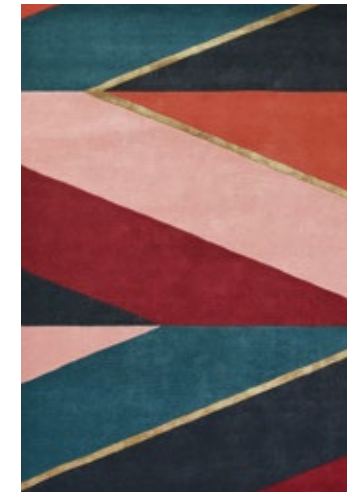
Zodiac Aquarius  
162105



Zodiac Pisces  
162205



Sahara pink  
056102



Sahara burgundy  
056105



Sahara round pink  
056102



Sahara round burgundy  
056105



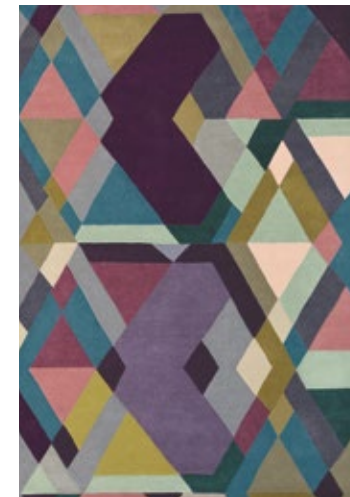
Romantic magnolia cream  
162701



Romantic magnolia pink  
162702



Romantic magnolia dark blue  
162708



Mosaic light purple  
057605



Plaid grey  
057804



Kinmo pink  
056802



Kinmo green  
056807



Tranquility beige  
056001



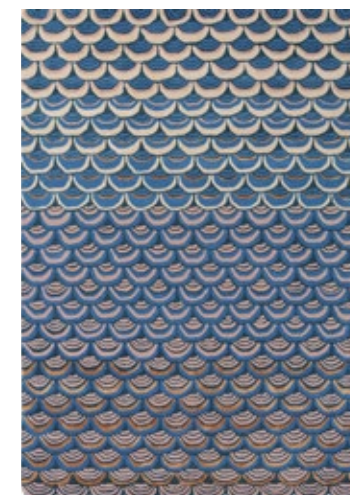
Tranquility aubergine  
056005



Tranquility round beige  
056001



Tranquility round aubergine  
056005



Masquerade blue  
160008



Masquerade round blue  
160008



Jardin pink  
160902



160908



# Harlequin



Dahlia coral | wilderness  
142408



Dahlia fuchsia | palm  
142402



Atoll hempseed | shell  
142504



Atoll auburn | stone  
142500



Melora hempseed | exhale  
Gold 142701



Melora positano | succulent |  
gold 142702



Popova caramel | slate | shell  
143101



Popova amazonia | sea glass |  
forest | japanese ink 143108



Makalu flint  
142605



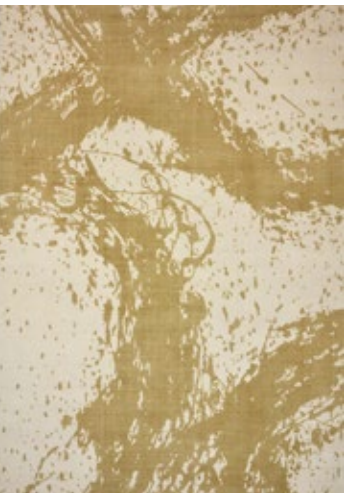
Sanguine aubergine | palm  
apricot | indigo 143205



# Harlequin



Enigmatic pewter | awakening  
143304



Enigmatic sahara | awakening  
143306



Diffinity oyster  
140001



Diffinity topaz  
140006



Arccos ochre  
40206



Arccos neptune  
40205



Zeal Ppewter  
043004



Rhythm saffron  
040906



Quintessence heather  
41801



Yasuni cerise  
040405



Shore truffle  
040605



Elliptic emerald  
140307



Bodega stone  
040504



Rosita harissa  
140402



Rosita putty  
140404



Floreale maize  
44906



Floreale fuschia  
44905



Kelapa zest  
040307



Lulu pebble  
44601



# Scion



Orto frost  
125404



Orto citrus  
125406



Orto rust  
125400



Poppy pop parchment | Gecko  
124807



Poppy pop sage | poppy  
124800



Stipa denim  
126408



Stipa forest  
126407



Ride the Wave denim  
125608



Ride the Wave liquorice  
125605



Ferns juniper  
125907



Jackfruit and the beanstalk  
chai | sage 125706



Leopard Dots pebble I sage  
125206



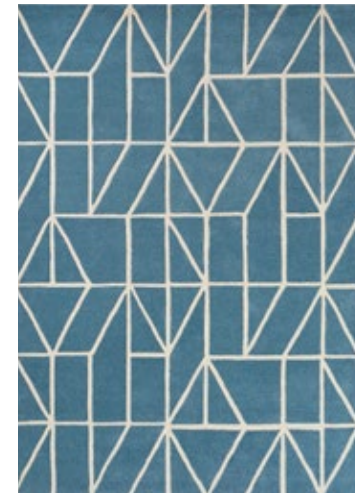
Epsilon charcoal  
023801



Uteki slate  
023604



Oxalis juniper  
025507



Viso denim  
24008



Mr Fox pebble I denim  
025328



Mr Fox mint I poppy  
025313



Mr Fox silver  
25304



Composition amber  
023701



Composition papaya  
023706



Kelda cobalt  
023508



Lintu dandelion  
24405



Mr Fox cinnamon  
25303



Mr Fox mustard  
25306



Mr Fox aqua  
25308



Mr Fox denim  
25318



Raita taupe  
24701



Kaleido pop  
26000



Lohko honey  
25806



Spike marine  
26808

# Florence Broadhurst



Tortoiseshell stripe jade  
039808



Japanese bamboo jade  
039507



Turnabouts black  
039205



Turnabouts claret  
039200



Japanese Fans ivory  
039301



Japanese Fans gold  
039305



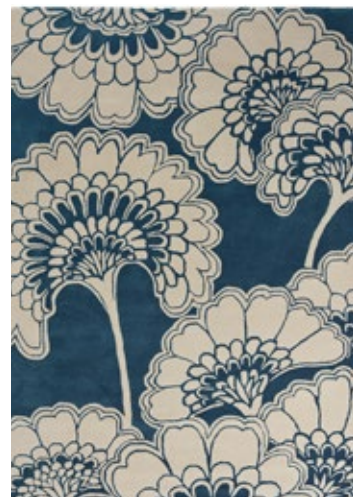
Floral 300 charcoal  
039604



Floral 300 poppy  
039600



Japanese Floral oyster  
039701



Japanese Floral midnight  
039708



Waterwave stripe citron  
039906



Waterwave stripe pearl  
039908

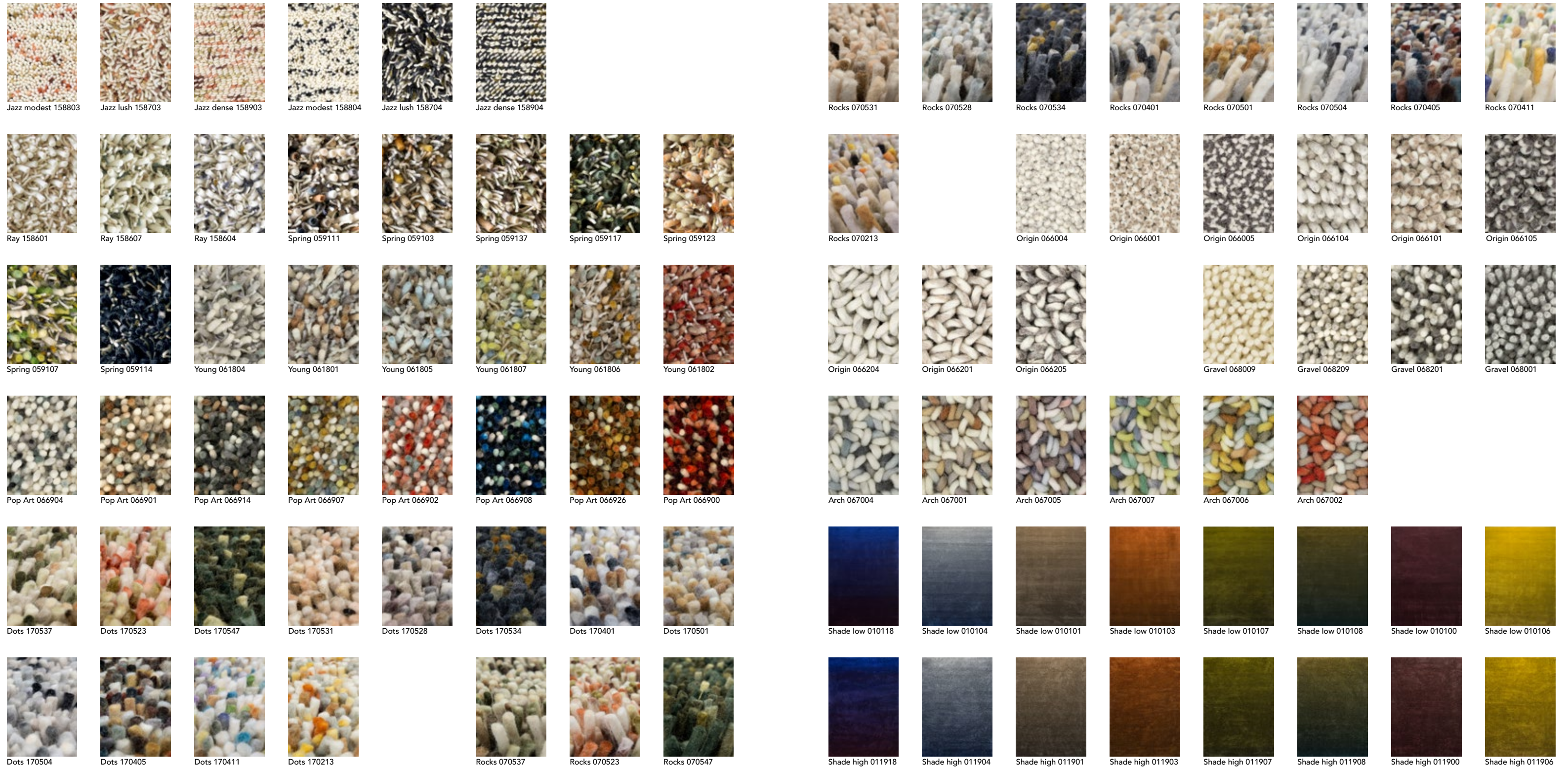


Slub mist  
039401

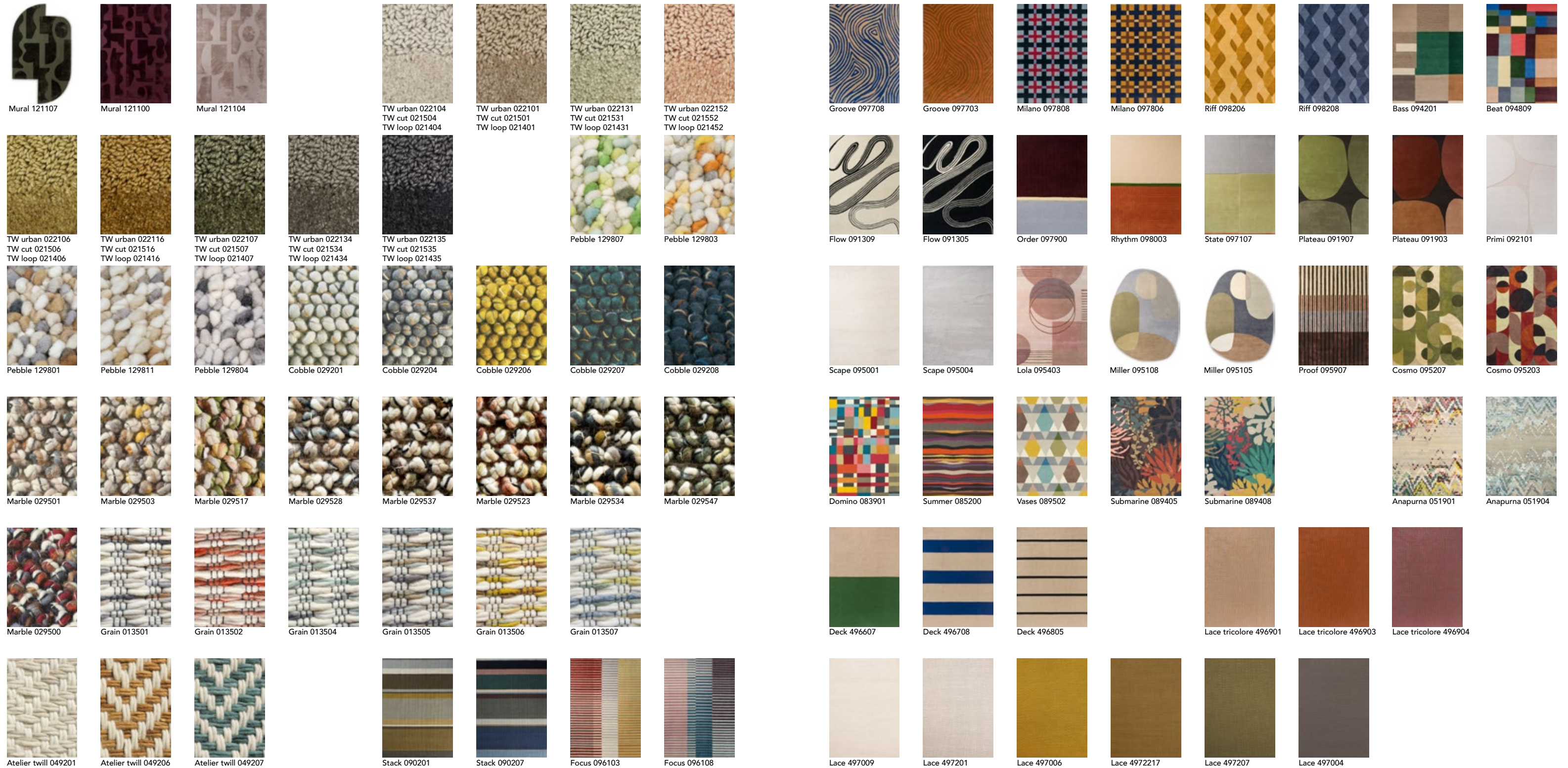


Slub charcoal  
039405

# B&C | Collection overview '24



# B&C | Collection overview '24



# BRINK & CAMPMAN

home interiors

Albert Schweitzerstraat 3  
7131 PG Lichtenvoorde | the Netherlands  
tel +31 (0)544 390 400  
brinkandcampman.com  
info@brinkandcampman.com



## Sales offices

the Netherlands: tel + 31 (0)544 390 431  
Europe: tel + 31 (0)544 390 429  
Germany, Austria, Switzerland: tel + 31 (0)544 390 430  
Americas, Asia, Africa, Oceania: tel + 31 (0)544 390 428

## The Netherlands, Germany, Austria & Switzerland

Robert Apeldoorn  
m +31 (0)6 101 329 64  
rapeldoorn@brinkandcampman.com

## Export

Jasper Kempers  
m +31 (0)6 128 157 72  
jkempers@brinkandcampman.com

We have partners in the following countries:

Australia	Greece	Portugal
Austria	Hong Kong	Romania
Azerbaijan	Hungary	Serbia
Belgium	Ireland	Singapore
Bolivia	Italy	Slovakia
Brazil	Japan	South Africa
Bulgaria	Kazakhstan	South-East Asia
Canada	Korea	Spain
China	Kuwait	Sweden
Colombia	Latvia	Switzerland
Czech Republic	Lithuania	Ukraine
Denmark	Malta	United Kingdom
Estonia	Mexico	USA
France	New Zealand	
Finland	Norway	
Germany	Poland	

## Colofon

### editorial

Studio Brink & Campman

### collection design

Studio Brink & Campman

### photography

Studio Floor Knaapen  
Alexander van Berge  
Studio Sterkenburg  
David in den Bosch

### styling

Studio Floor Knaapen  
Studio Brink & Campman

### graphic design

Studio Brink & Campman

### print

Drukkerij Roelofs

We take reservations for printing errors,  
colour differences, or changes in the collections.

All rights are reserved.

© 2023 Brink & Campman



BY APPOINTMENT TO THE COURT OF THE NETHERLANDS

SMETA









BY APPOINTMENT TO THE COURT OF THE NETHERLANDS

**B&C**

Albert Schweitzerstraat 3  
7131 PG Lichtenvoorde | the Netherlands  
tel +31 (0)544 390 400  
brinkandcampman.com  
info@brinkandcampman.com

